

## Digester

### Introduction:

Digester is a sample digestion and transformation equipment according to the classical wet digestion principle. It is mainly used in agriculture, forestry, environmental protection, geology and petroleum, chemical industry, food and other departments as well as universities and scientific research departments for the digestion of plants, seeds, feed, soil, ore and other samples before chemical analysis. It is the best supporting product of Kjeldahl nitrogen analyzer.



### Features:

- \* The high density graphite heating module has good uniformity and small temperature buffer, and the design temperature is up to 550°C.
- \* Aluminum alloy heating module surface using aviation industry coating technology, beautiful, durable, design temperature 450°C.
- \* The temperature control system adopts 5.6 inch color touch screen, Chinese and English conversion, easy to operate.
- \* Formula program input using table type fast input method, clear logic, fast speed, not easy to make mistakes.
- \* 0-40 segment program can be arbitrarily selected and set.
- \* Single point heating and curve heating modes are optional
- \* Intelligent PID self-tuning temperature control of high precision, reliable and stable.
- \* Electrical control system adopts solid state relay, quiet, anti-interference ability is strong.
- \* Segmented power supply and power outage prevention restart function can avoid potential risks.
- \* Equipped with overtemperature and overpressure, over-current protection module.

### Technical Parameters:

Model	BKD-10RS BKD-10RL	BKD-15RS BKD-15RL	BKD-20RS BKD-20RL
Temp. Range	S=RT+5°C-550°C, L=RT+5°C-450°C		
Temperature Accuracy	±1°C		
Capacity	10pcs	15pcs	20pcs
Digestive Tube	Glass tube 300ml*10	Glass tube 300ml*15	Glass tube 300ml*20
Aperture Diameter(mm)	Φ43.5		
Heating Block Material	S=High density graphite / L=6061 Aluminum alloy		
Rate of Heating	≈ 8--15°C /min		
Temperature Control System	1-40 segment program heating/single point heating dual mode		
Formula Management	9 groups		
Timed Shutdown	1—999min		
Display	5.5-inch color touch screen,		
Power Supply	AC220V/50Hz		
Consumption	1.4KW	2.1KW	2.8KW
Package Size (W*H*D) mm	870*460*600	870*460*600	870*460*600
Net Weight (kg)	18	21	26
Gross Weight (kg)	24	28	34

## Exhaust System Scrubber

### Features:

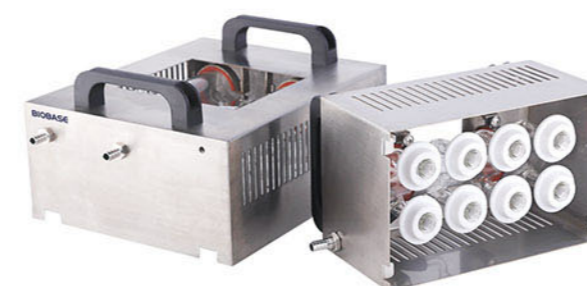
- \* This product is acid, alkali neutralization equipment with negative pressure pump, the air pump has large flow, long life and easy to use.
- \* The three-stage absorption of lye and distilled water buffer ensures the reliability of gas exclusion.
- \* The instrument is simple, safe and reliable to use.
- \* The replacement of neutralization solution is convenient and easy to operate.



### Technical Parameters:

Model	ES1B
Extraction Flow	18L / min
Air Extraction Interface	Φ8~10mm(Reducer fittings are available)
Alkaline Solution Bottle	1.7L
Distilled Water Bottle	1.7L
Alkali Concentration	10%~35%
Power Supply	AC220V/50Hz
Consumption	120W
Package Size (W*H*D) mm	470*480*450
Gross Weight (kg)	15.5

## Gas Collection Hood



### Features:

- \* The sealing cover is made of polytetrafluoroethylene, resistant to high temperature, strong acid and alkali.
- \* The collecting tube collects acid gas deep inside the tube with high reliability.
- \* It is designed as a conical plus cap structure, and each seal cap weighs 35g.
- \* Using gravity seal, sealing reliable and convenient.
- \* The shell is welded with 316 stainless steel plate, which has good corrosion resistance.

### Technical Parameters:

Model	GCH-08	GCH-10	GCH-15	GCH-20
Collecting Port	8	10	15	20
Air Extraction Port	1	1	2	2
Apply	BKD-8B	BKD-10RS BKD-10RL	BKD-15RS BKD-15RL	BKD-20RS BKD-20RL
Package Size(W*H*D)mm	400*300*300	350*260*260	350*260*260	350*260*260
Gross Weight(kg)	3	3	4	4.2